



FOR LEASE | SHOWROOM/WAREHOUSE SPACE



3409 8 Street SE

AVAILABLE: Immediately

Calgary, Alberta

Concrete building with fire sprinklers. Two contiguous units available.

Municipal Address

3409 8 Street SE
Calgary, Alberta

Area

2,500.0 sq. ft.

Ceiling Height

16' / 4.88m

Legal Description

Plan 1846JK, Block 1

Operating Costs

\$6.83 / sq. ft. (CAM & Tax)

Bay Dimensions

25'1" W x 99'9" L
7.65m W x 30.4m L

Zoning

I-C (Industrial Commercial)

Power

100A, 208V, 3 phase, 4 wire

Loading & Access

Dock Height 8' W x 10' H

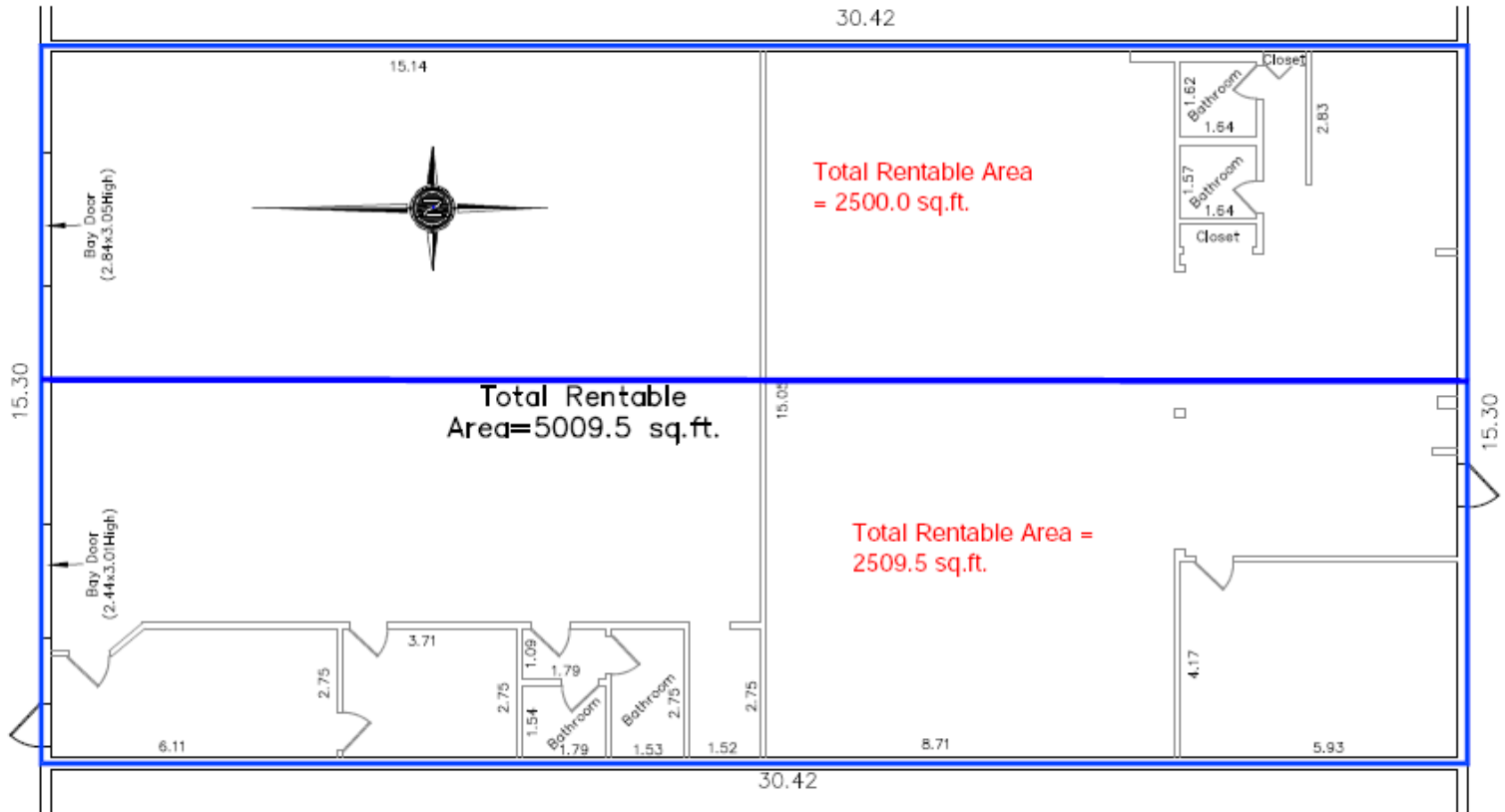
The information contained herein may change and the property removed from the market at any time without prior notice.
It has been obtained from sources believed to be correct but does not form part of any present or future contract.



3409 8 Street SE

AVAILABLE: Immediately

Calgary, Alberta



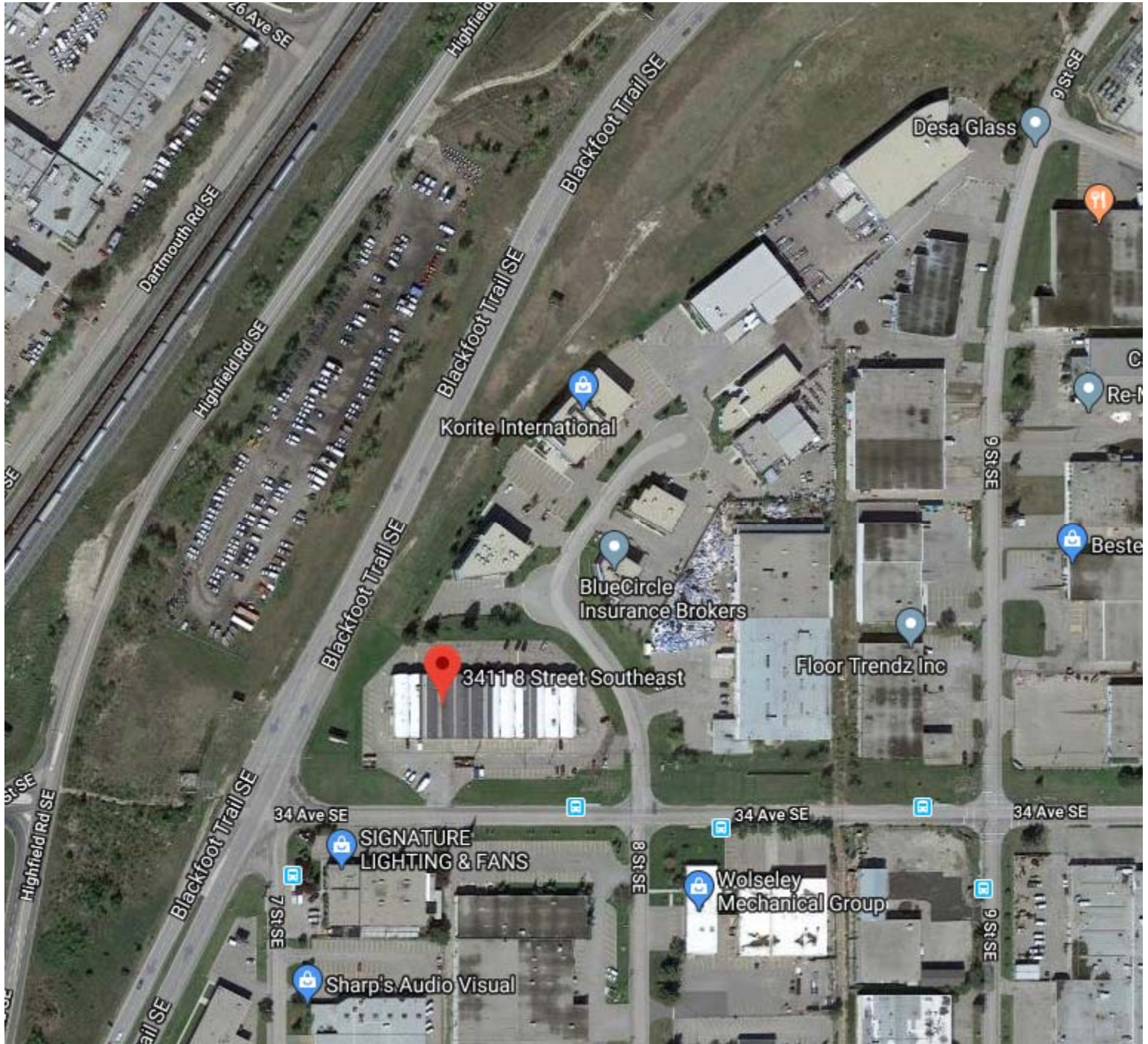
The information contained herein may change and the property removed from the market at any time without prior notice. It has been obtained from sources believed to be correct but does not form part of any present or future contract.



3409 8 Street SE

AVAILABLE: Immediately

Calgary, Alberta



The information contained herein may change and the property removed from the market at any time without prior notice. It has been obtained from sources believed to be correct but does not form part of any present or future contract.